

TUBĄDZIN GROUP

# MODERN TERRACE TILES



Open the interior to the terrace

**koraTER**  
BY KORZILIUS®



## INDEX

---

Grand Cave koraTER® STR

Torano White koraTER®

Massa koraTER®

Lavish koraTER®

Escala koraTER®

Patio Wood koraTER®

Wood Deck koraTER® STR

Tubądzin for PGC

---

Caffeine koraTER® STR

Amir Stone koraTER®

Fuse koraTER®

Gobi koraTER®

Oak Deck koraTER®

Wood Stripes koraTER®

## MODERN TERRACE TILES

Open the interior to the terrace



Get to create an oasis of relaxation where you can chill out in the fresh air amidst nature. Create your own dream space by using our terrace tiles.

koraTER® terrace tiles offer almost unlimited design options. They are easy to keep clean. Their durability and robustness mean that you will enjoy your beautifully arranged space for many years to come.

They are perfect for home, flat, garden, business, office and park applications. These can be applied anywhere you want to create a perfect relaxation spot.

Terraces, balconies, gardens and driveways make up an integral part of our homes. When selecting patio slabs, ensure that they match the style and colour of the building's façade. Should you happen to have a modern property, you can opt for distinctive colours with a natural stone pattern. A traditional or rustic house will look great against a wooden pattern.

Explore the koraTER® terrace tile collections.

## STYLISTICS



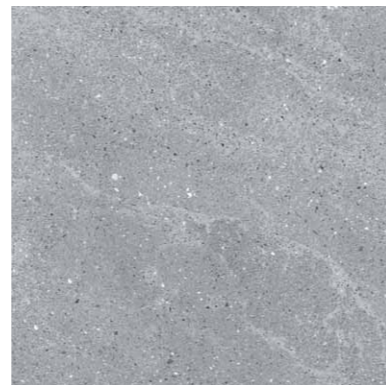
### ORGANIC REFINEMENT TILES IMITATING STONE

Stone patterns stand for a compromise between nature and modernity. Imitation of structures that can be found in nature guarantees the unique nature of an arrangement.



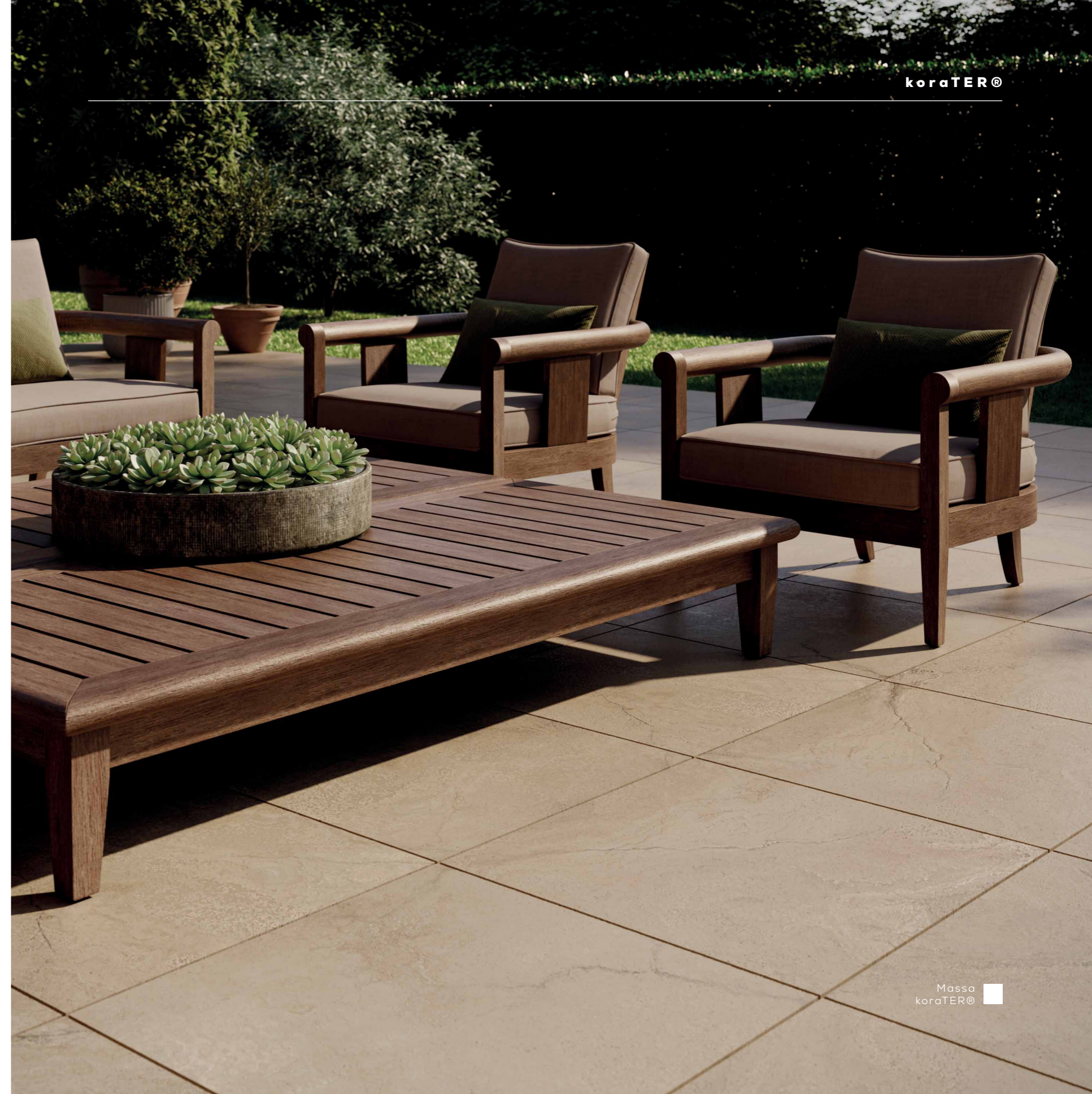
### RAW MODERNITY TILES FEATURING A CONCRETE TEXTURE

A concrete texture perfectly defines the modern style. It represents a perfect choice for those who are minimalists. Its subtle colouring is suitable for highlighting plants and expressive accessories.

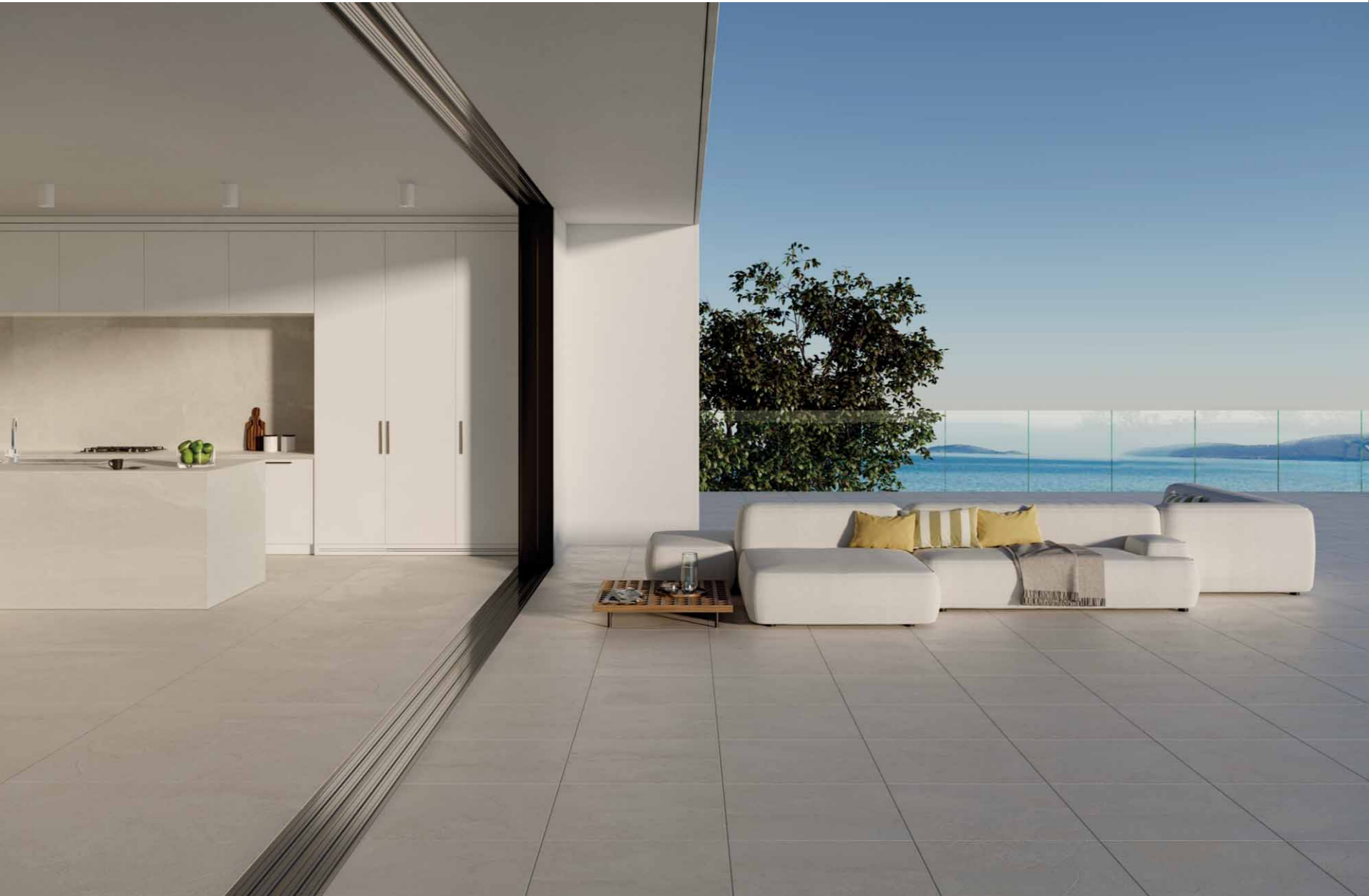


### CLOSE TO NATURE WOOD-PATTERNED TILES

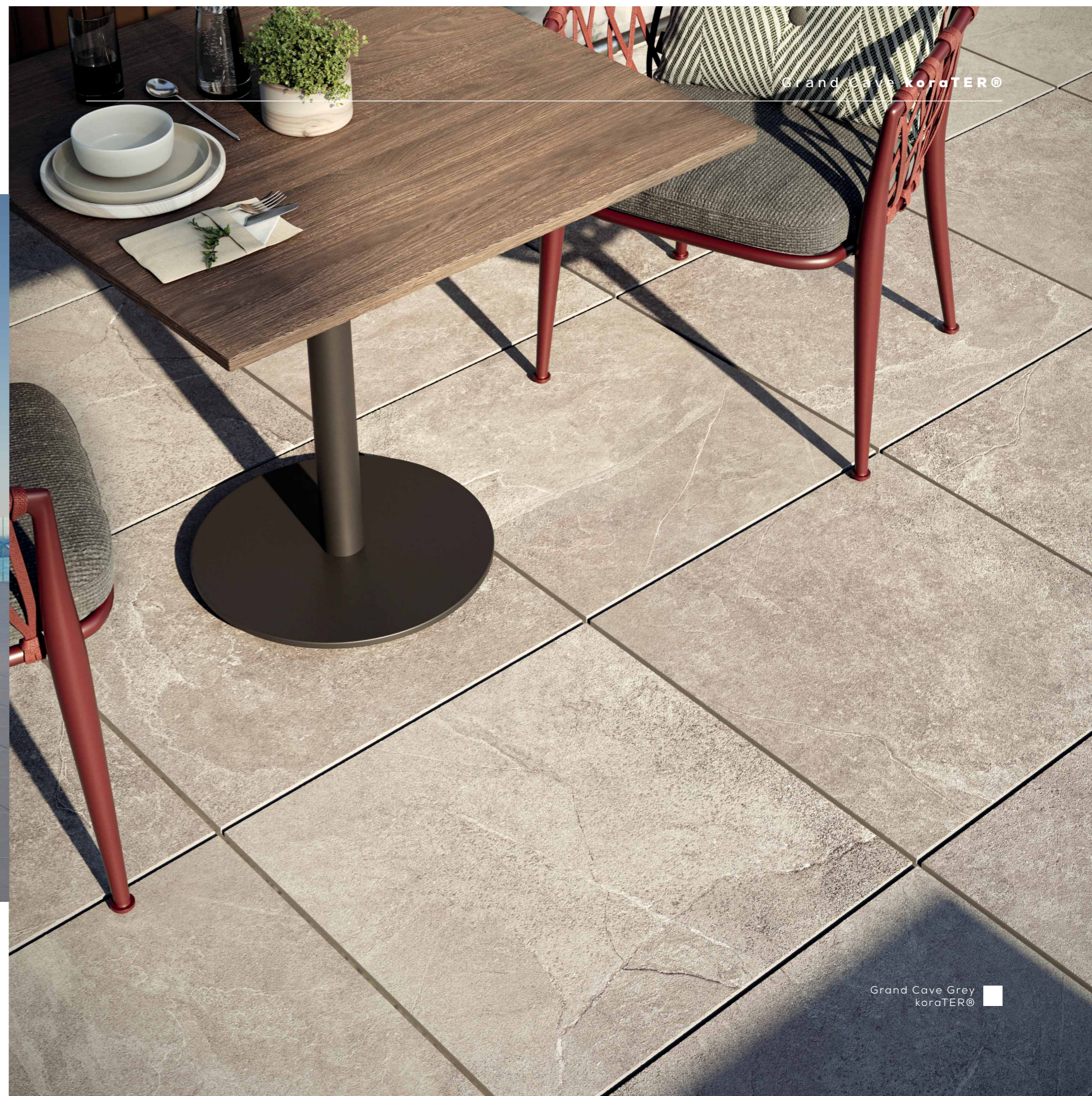
Warm colours and clearly defined grain provide a gentle atmosphere conducive to relaxation. The wooden pattern offers an excellent foundation for a cosy, timeless design.



Grand Cave **korATER®**



Grand Cave Ivory  
korATER®



Grand Cave **korATER®**

Grand Cave Grey  
korATER®

Grand Cave koraTER®

Grand Cave koraTER®



Grand Cave Brown  
koraTER®





Grand Cave **koraTER**®



Grand Cave Graphite  
**koraTER**®

Grand Cave **koraTER**®



Grand Cave Graphite  
**koraTER**®

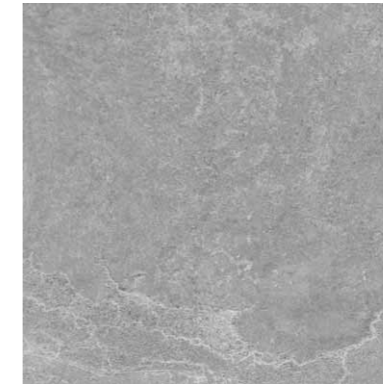




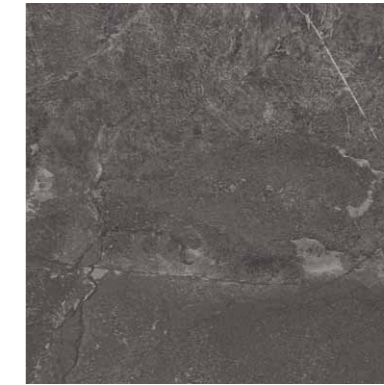
**Grand Cave Ivory korATER® STR**  
PORCELAIN TERRACE TILE  
598 × 598 × 18 mm



**Grand Cave Brown korATER® STR**  
PORCELAIN TERRACE TILE  
598 × 598 × 18 mm



**Grand Cave Grey korATER® STR**  
PORCELAIN TERRACE TILE  
598 × 598 × 18 mm



**Grand Cave Graphite korATER® STR**  
PORCELAIN TERRACE TILE  
598 × 598 × 18 mm

Name	(EAN)	Length	Width	Height	Abrasion resistance class	Anti-slip rating / *	Rectification	pcs/box	Quantity m <sup>2</sup> in a box	Carton weight	boxes/pallet
Grand Cave Ivory korATER STR	5900199253346	598	598	18	PEI IV	R11/ B*	Yes	2	0,72	29,6	32
Grand Cave Brown korATER STR	5900199253643	598	598	18	PEI III	R11/ B*	Yes	2	0,72	29,6	32

\* Barefoot Slip Resistance

Name	(EAN)	Length	Width	Height	Abrasion resistance class	Anti-slip rating / *	Rectification	pcs/box	Quantity m <sup>2</sup> in a box	Carton weight	boxes/pallet
Grand Cave Grey korATER STR	5900199253704	598	598	18	PEI IV	R11/ B*	Yes	2	0,72	29,6	32
Grand Cave Graphite korATER STR	5900199253674	598	598	18	PEI III	R11/ B*	Yes	2	0,72	29,6	32

\* Barefoot Slip Resistance

Torano White koraTER®

Torano White koraTER®



Torano White  
koraTER®



**Torano White koraTER®**  
 PORCELAIN TERRACE TILE  
 598 × 598 × 18 mm

Name	(EAN)	Length	Width	Height	Abrasion resistance class	Anti-slip rating / *	Rectification	pcs/box	Quantity m <sup>2</sup> in a box	Carton weight	boxes/pallet
Torano White koraTER	5900199253520	598	598	18	PEI IV	R11/ B*	Yes	2	0,72	29,6	32

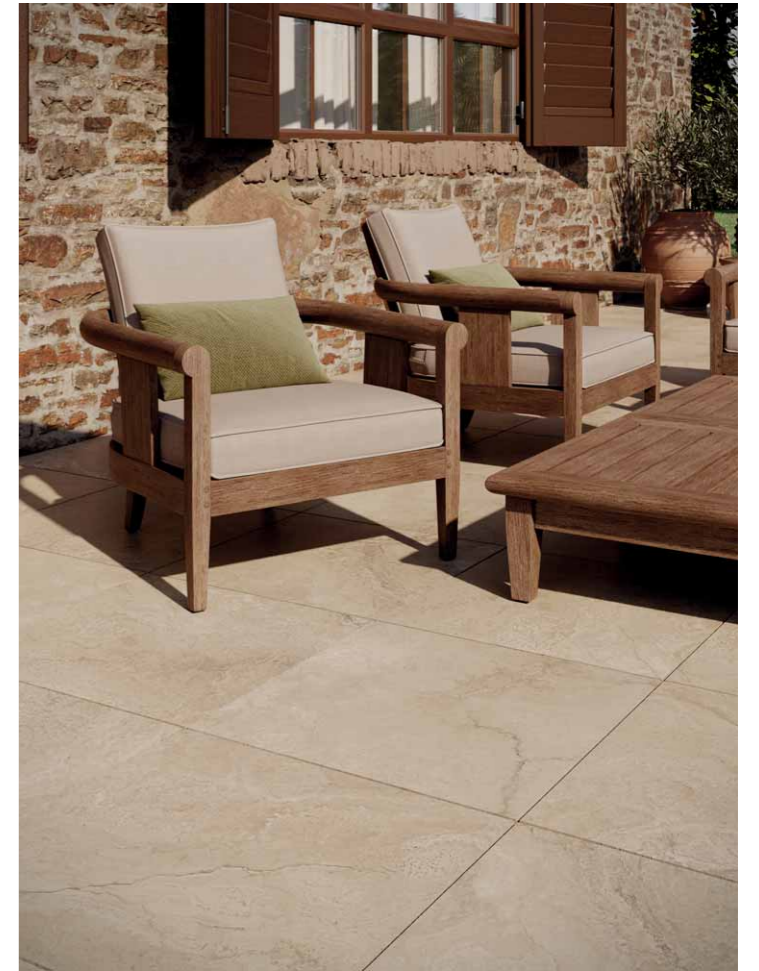
\* Barefoot Slip Resistance

Massa koraTER®



Massa  
koraTER®

Massa koraTER®



Massa  
koraTER®



**Massa koraTER®**  
 PORCELAIN TERRACE TILE  
 598 × 598 × 18 mm

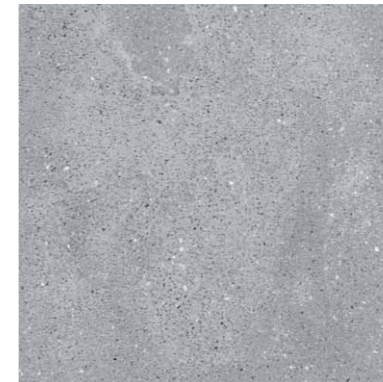
Name	(EAN)	Length	Width	Height	Abrasion resistance class	Anti-slip rating / *	Rectification	pcs/box	Quantity m <sup>2</sup> in a box	Carton weight	boxes/pallet
Massa koraTER	5900199253551	598	598	18	PEI IV	R11/ B*	Yes	2	0,72	29,6	32

\* Barefoot Slip Resistance





Lavish Grey koraTER®



Lavish Grey koraTER®  
PORCELAIN TERRACE TILE  
598 × 598 × 18 mm



Lavish Graphite koraTER®  
PORCELAIN TERRACE TILE  
598 × 598 × 18 mm

Name	(EAN)	Length	Width	Height	Abrasion resistance class	Anti-slip rating / *	Rectification	pcs/box	Quantity m <sup>2</sup> in a box	Carton weight	boxes/pallet
Lavish Graphite koraTER	5900199253582	598	598	18	PEI III	R11/ B*	Yes	2	0,72	29,6	32
Lavish Grey koraTER	5900199253612	598	598	18	PEI IV	R11/ B*	Yes	2	0,72	29,6	32

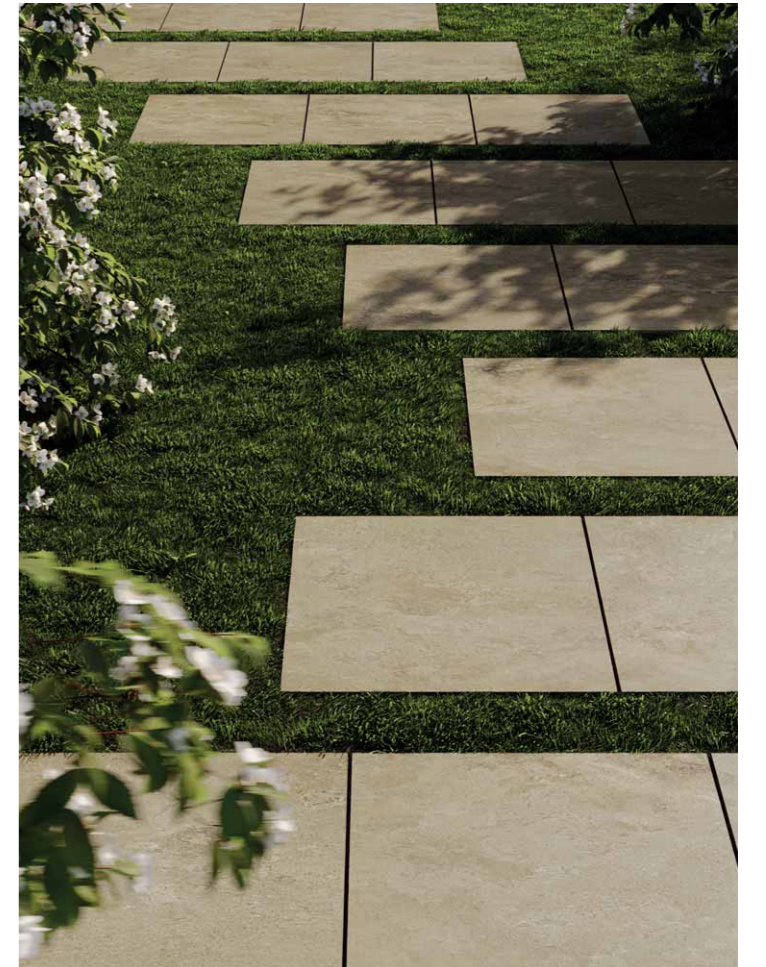
\* Barefoot Slip Resistance

Escala koraTER®



Escala  
koraTER®

Escala koraTER®



Escala  
koraTER®





**Escala Beige korATER®**  
PORCELAIN TERRACE TILE  
598 × 598 × 18 mm



**Escala Brown korATER®**  
PORCELAIN TERRACE TILE  
598 × 598 × 18 mm

Name	(EAN)	Length	Width	Height	Abrasion resistance class	Anti-slip rating / *	Rectification	pcs/box	Quantity m <sup>2</sup> in a box	Carton weight	boxes/pallet
Escala Beige korATER	5900199253285	598	598	18	PEI IV	R11 / B*	Tak	2	0,72	29,6	32
Escala Brown korATER	5900199253315	598	598	18	PEI IV	R11 / B*	Tak	2	0,72	29,6	32

\* Barefoot Slip Resistance

Patio Wood koraTER®

Patio Wood koraTER®





**Patio Wood koraTER®**  
 PORCELAIN TERRACE TILE  
 598 × 598 × 18 mm

Name	(EAN)	Length	Width	Height	Abrasion resistance class	Anti-slip rating / *	Rectification	pcs/box	Quantity m <sup>2</sup> in a box	Carton weight	boxes/pallet
Patio Wood koraTER	5900199253223	598	598	18	PEI IV	R11 / C*	Yes	2	0,72	29,6	32

\* Barefoot Slip Resistance

Wood Deck **koraTER**®



Wood Deck  
**koraTER**®

Wood Deck **koraTER**®



Wood Deck  
**koraTER**®



Wood Deck korATER® STR

598 × 598 × 18 mm

Name	(EAN)	Length	Width	Height	Abrasion resistance class	Anti-slip rating / *	Rectification	pcs/box	Quantity m <sup>2</sup> in a box	Carton weight	boxes/pallet
Wood Deck korATER STR	5900199253254	598	598	18	PEI III	R11 / C*	Tak	2	0,72	29,6	32

\* Barefoot Slip Resistance



**Caffeine Beige koraTER® STR**  
PORCELAIN TERRACE TILE  
598 × 598 × 18 mm



**Caffeine Grey koraTER® STR**  
PORCELAIN TERRACE TILE  
598 × 598 × 18 mm



**Caffeine Graphite koraTER® STR**  
PORCELAIN TERRACE TILE  
598 × 598 × 18 mm



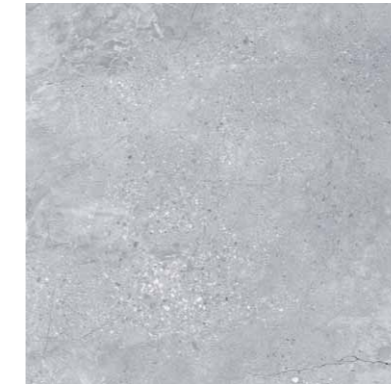
**Amir Stone Ivory koraTER® STR**  
PORCELAIN TERRACE TILE  
598 × 598 × 18 mm



**Amir Stone Graphite koraTER® STR**  
PORCELAIN TERRACE TILE  
598 × 598 × 18 mm



**Fuse Beige koraTER® STR**  
PORCELAIN TERRACE TILE  
598 × 598 × 18 mm



**Fuse Grey koraTER® STR**  
PORCELAIN TERRACE TILE  
598 × 598 × 18 mm



**Gobi Ivory koraTER® STR**  
PORCELAIN TERRACE TILE  
598 × 598 × 18 mm



**Gobi Grey koraTER® STR**  
PORCELAIN TERRACE TILE  
598 × 598 × 18 mm



**Gobi Black koraTER® STR**  
PORCELAIN TERRACE TILE  
598 × 598 × 18 mm



**Oak Deck koraTER® STR**  
PORCELAIN TERRACE TILE  
598 × 598 × 18 mm



**Wood Stripes koraTER® STR**  
PORCELAIN TERRACE TILE  
598 × 598 × 18 mm

Name	(EAN)	Length	Width	Height	Abrasion resistance class	Anti-slip rating / *	Rectification	pcs/box	Quantity m <sup>2</sup> in a box	Carton weight	boxes/pallet
Caffeine Beige koraTER STR	5900199250413	598	598	18	IV	R11 / B*	Tak	2	0,72	29,6	32
Caffeine Grey koraTER STR	5900199250383	598	598	18	IV	R11 / B*	Tak	2	0,72	29,6	32
Caffeine Graphite koraTER STR	5900199250383	598	598	18	III	R11 / B*	Tak	2	0,72	29,6	32
Amir Stone Ivory koraTER STR	5900199250208	598	598	18	IV	R11 / B*	Tak	2	0,72	29,6	32
Amir Stone Graphite koraTER STR	5900199250239	598	598	18	III	R11 / B*	Tak	2	0,72	29,6	32
Fuse Beige koraTER STR	5900199250475	598	598	18	IV	R11 / B*	Tak	2	0,72	29,6	32

\* Barefoot Slip Resistance

Name	(EAN)	Length	Width	Height	Abrasion resistance class	Anti-slip rating / *	Rectification	pcs/box	Quantity m <sup>2</sup> in a box	Carton weight	boxes/pallet
Fuse Grey koraTER STR	5900199250444	598	598	18	IV	R11 / B*	Tak	2	0,72	29,6	32
Gobi Ivory koraTER STR	5900199250291	598	598	18	IV	R11 / B*	Tak	2	0,72	29,6	32
Gobi Grey koraTER STR	5900199250260	598	598	18	IV	R11 / B*	Tak	2	0,72	29,6	32
Gobi Black koraTER STR	5900199250321	598	598	18	III	R11 / B*	Tak	2	0,72	29,6	32
Oak Deck koraTER STR	5900199250536	598	598	18	III	R11 / B*	Tak	2	0,72	29,6	32
Wood Stripes koraTER STR	5900199250505	598	598	18	III	R11 / B*	Tak	2	0,72	29,6	32

\* Barefoot Slip Resistance

## INSTALLATIONS

One great advantage of koraTER® tiles is flexibility in the way they are installed. This allows to focus solely on aesthetic qualities of individual collections during purchase. The place and the substrate on which the panels will be fixed are not limited in any way.

### INSTALLATION ON GRASS



- 1/ Grass
- 2/ koraTER® terrace clinker tile
- 3/ Compacted ballast 5-8 cm
- 4/ Soil

- Laying the terrace clinker tiles properly and stably on grass is relatively easy and can be successfully done independently. First of all, the grass has to be carefully cut and the soil has to be selected to a depth of approx. 5-8 cm. Then the space is filled with a 3/6 mm aggregate. It is important to consider the thickness of the clinker tile when compacting the base. It should not protrude above the level of the cut grass in order not to hinder lawn care.
- The advantage of this solution is that the clinker tiles can be laid anywhere, and it is easy to adjust their position or level.

**APPLICATION** GARDEN, SQUARE

### INSTALLATION ON TERRACE SUPPORTS



Installation of terrace tiles on non-adjustable supports

- When deciding to install terrace tiles on supports, care must be taken to ensure a suitable sub-floor. It should have a slope and be waterproofed. The chosen supports – fixed or adjustable. The supports should be laid according to the design made strictly in accordance with the manufacturer's recommendations.
- The supports are equipped with special-purpose distance strips to ensure that an equal distance is maintained between the tiles. The gaps provide drainage so that water does not accumulate on the terrace.
- Free space between the substrate and the tiles can be used, for example, for installing a watering system for plants. An additional advantage is that the look of the terrace can be modified at any time, as the components are not permanently connected to each other.

**APPLICATION** TERRACES, BALCONIES



- 1/ koraTER® terrace clinker tile
- 2/ System footings
- 3/ Waterproof insulation
- 4/ Concrete foundation and slope

Installation of terrace tiles on adjustable supports

### INSTALLATION ON DRAINAGE MORTAR



- 1/ koraTER® terrace clinker tile
- 2/ Clinker tile adhesive
- 3/ Concrete drainage
- 4/ Compacted gravel
- 5/ Soil

- In areas subject to increased loads, the clinker tiles can be installed by means of adhesive. The substrate requires several layers to be prepared to ensure the stability and strength of the usable surface. The bottom layer, laid directly on the ground, is a compacted gravel over which concrete is poured. The drainage concrete layer should be 8 to 10 centimetres thick. The clinker tiles are installed using adhesive to the base course.
- Bonded clinker tiles can be tightly grouted. To ensure effective drainage, the surface should include a slope of 1.5 - 2%.
- In case of large usable surfaces, expansion gaps should be planned, dividing the entire area into sectors not exceeding 16 m².
- Adhesive-on installation minimises the risk of the clinker tiles shifting.

**APPLICATION** DRIVEWAYS, GARAGES, INDUSTRIAL FACILITIES

### INSTALLATION ON SAND



- 1/ koraTER® terrace clinker tile
- 2/ Permeable aggregate layers of decreasing fraction
- 3/ Non-woven fabric against overgrowth
- 4/ Soil

- In areas where increased load-bearing capacity is not required, the terrace clinker tiles can be installed on sand or gravel bedding.
- In order to prevent overgrowth of plants, a non-woven fabric is laid directly onto the ground as the first layer of substrate. Then, to ensure effective drainage, aggregates of decreasing fraction are used sequentially, where a layer of sand or 3/6 mm aggregate should be placed directly under the clinker tiles.
- In this type of installation, the joints are not filled in order to ensure the free flow of water. If it is important to prevent the tiles from moving sideways, they can be fixed in two ways: by applying a contact layer of adhesive mortar underneath or using special-purpose spacers.

**APPLICATION** TERRACE, GARDEN

## TECHNICAL SPECIFICATIONS

In addition to their striking design, koraTER® clinker tiles are distinguished by their durability and a range of functional properties. They are resistant to external influences, including salt used in the winter season to thaw slippery surfaces. They are made of fully frost-resistant ceramic material. The surface structure of all koraTER® terrace clinker tiles is non-slip.

# TUBADZIN

[www.tubadzin.pl](http://www.tubadzin.pl)

---

The Catalogue is to be regarded as a demonstration material and is not a quotation, as defined by the Civil Code.

Because of the printing technique, the presentations may slightly differ from the original products.

Neither any part of this Catalogue nor its entire contents may be copied in any way without permission of the Tubądzin Management Group.